



Rosamond Skypark

“A LUXURY FLY-IN COMMUNITY”

BVS Development Inc.
P.O. Box D
Rosamond, California 93560
Designers / Developers / General Contractors
(805) 256 2663 • (805) 821-5152 • (805) 822-5523

Features

Homes

Exterior Features

All homes have stucco exteriors; tile roofs; masonry side walls, from house to rear property line; concrete patios and sidewalks; asphalt driveways; front yard landscaping and sprinklers. Additionally, the homes feature masonry screen walls; R-19 insulation in exterior walls; R-38 insulation in ceilings; dual glaze windows and sliding doors, with screen doors. Rear yard landscaping and sprinklers, optional.

Interior Features

The homes have "Lennox Pulse" gas, FAU, (96% efficiency rating), with energy efficient refrigerated air conditioning; 40 gallon, gas, energy efficient water heaters; tiled entries; custom quality washers and electric dryers; energy efficient "Marco" heat circulating fireplace with fire brick interior, log lighter, glass sliding doors, sliding screens and tiled front; vaulted ceilings in living room and family room; built-in TV and telephone outlets; custom quality floor coverings - carpet and vinyl; decorator coordinated light fixtures; and electric garage door openers with two remote control units. Window coverings, optional; and non-structural upgrading can be arranged.

Kitchens

Featuring custom quality oak cabinets; dishwasher; disposer; electric range (gas optional) with eyelevel microwave and venthood (models 1140, 1424, and 1800); built-in microwave and vented cooktops (gas cooktops, optional); trash compactor (models 1800, 2190, and 2352); refrigerator/freezer, style 17CF (models 1140 & 1424), style 19CF (models 1600, 1660, and 1800), style 21CF (models 2190 & 2352); formica kitchen counter tops (models 1140, 1424, 1600, 1660, and 1800 [tile optional - model 1800]); tiled kitchen counter tops (models 2190 & 2352).

Bathrooms

Fully tiled bathrooms (models 2190 & 2352); cultured marble vanity tops with full mirrors; cultured marble bath and shower (models 1424, 1600, 1660, and 1800); tiled effect fiberglass bath and shower (model 1140).

Hangars

General Features

All hangars are "Butler" steel buildings, custom quality and high wind resistant. The have "Butler II" prefinished colored roof and wall panels to match the homes; V-shaped double gable-end, steel truss roof clear span; pre-finished eave gutters with downspouts; two gravity roof ventilators; four translucent roof panels - 3' x 10' each; one 3' x 7' x 1 3/4" metal (hollow) single swing side door; one electronically operated "Erect-A-Tube" bifold hangar door; steel reinforced, 4" concrete floor; full width, hard surface apron and access to taxiway. Further, each hangar has an exterior floodlight; three interior lights; three interior electrical receptacles; and a cold water hose bib on the outside hangar wall. Non-structural upgrading can be arranged.

Hangar Sizes Available

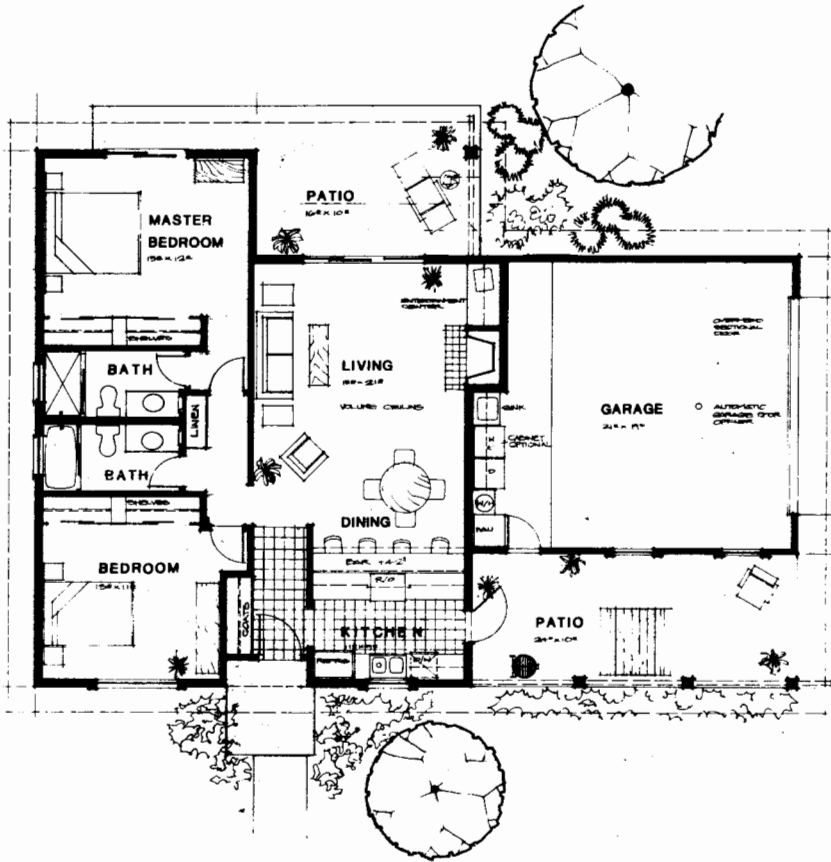
Model	Size
H-1680	40' x 42'
H-2000	40' x 50'
H-2400	40' x 60'

Note

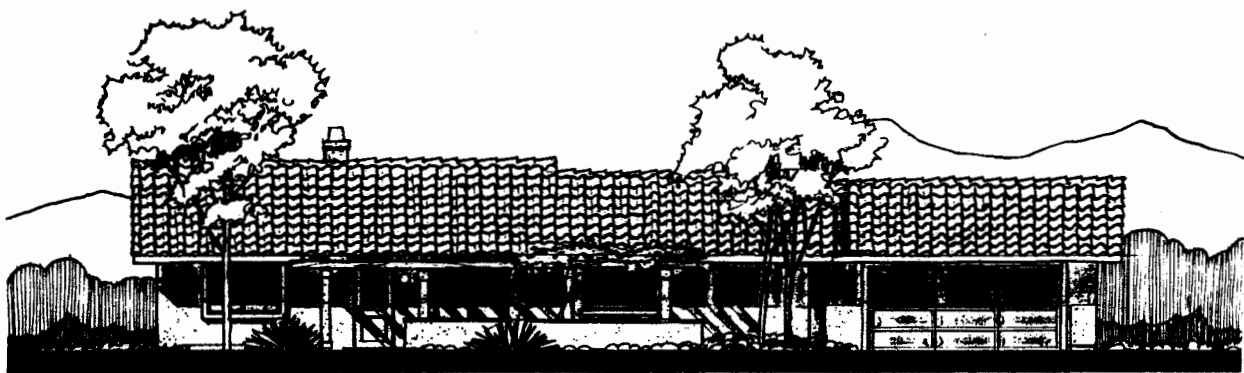
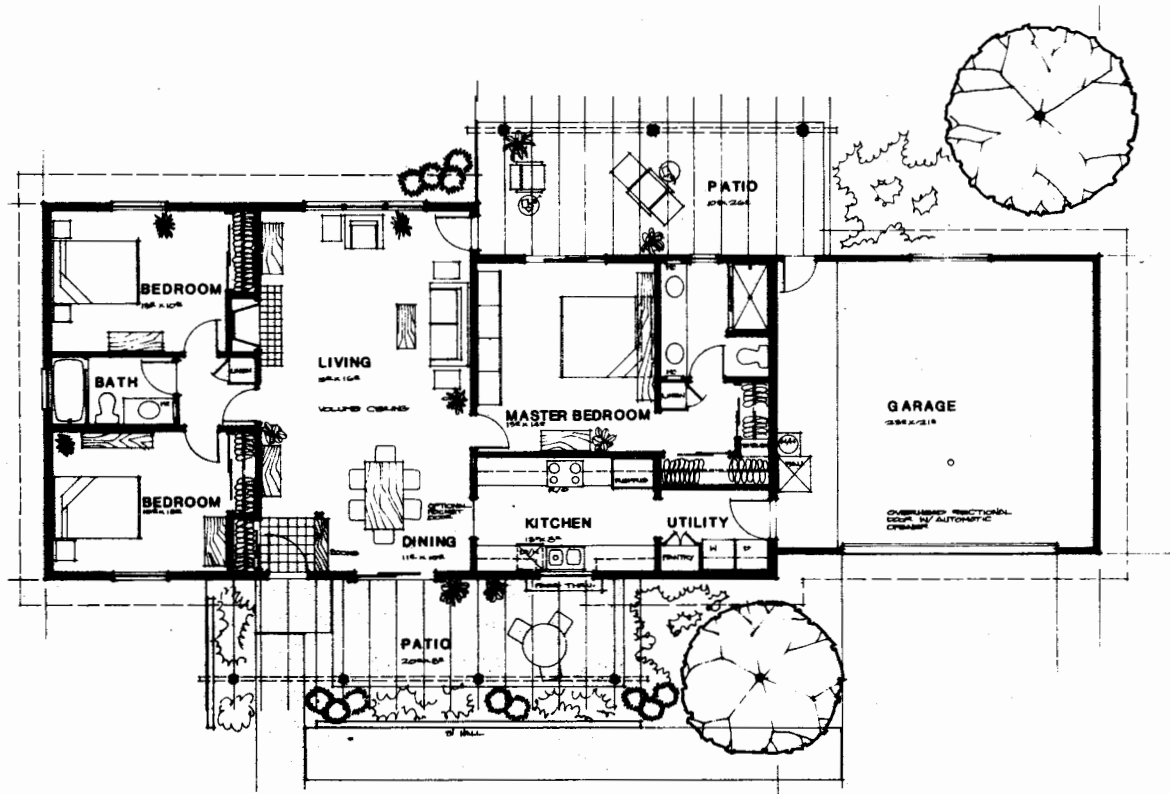
The developer has located all hangars on residential lots with thoughtful consideration to privacy, aesthetics, panorama, selling price and prevailing wind conditions. Limited changes may be arranged, subject to final determination and consent by the developer. Prospective buyers must specify minimum hangar door dimensions - width and height - with door in the open position to allow sufficient clearance for aircraft passage.

The developer of Rosamond Skypark reserves the right to modify design, details, specifications or prices without notice.

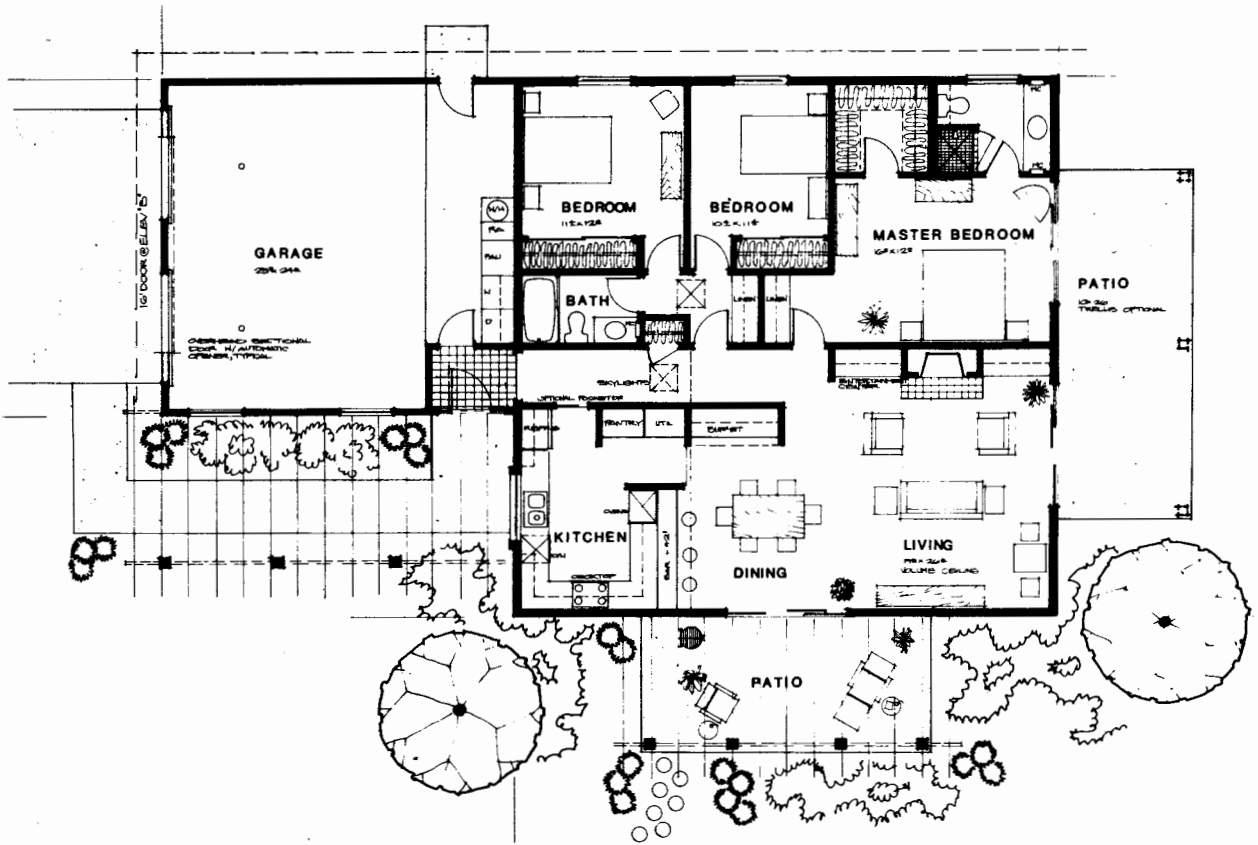
Plan 1140



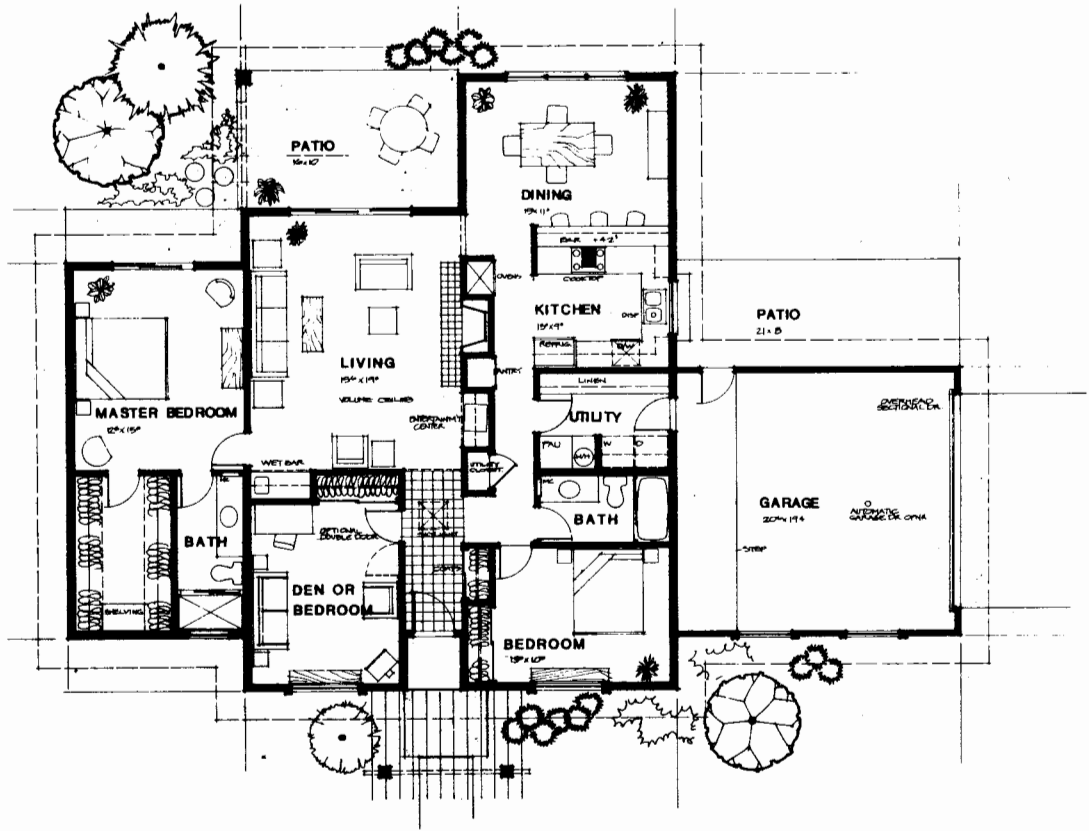
Plan 1424



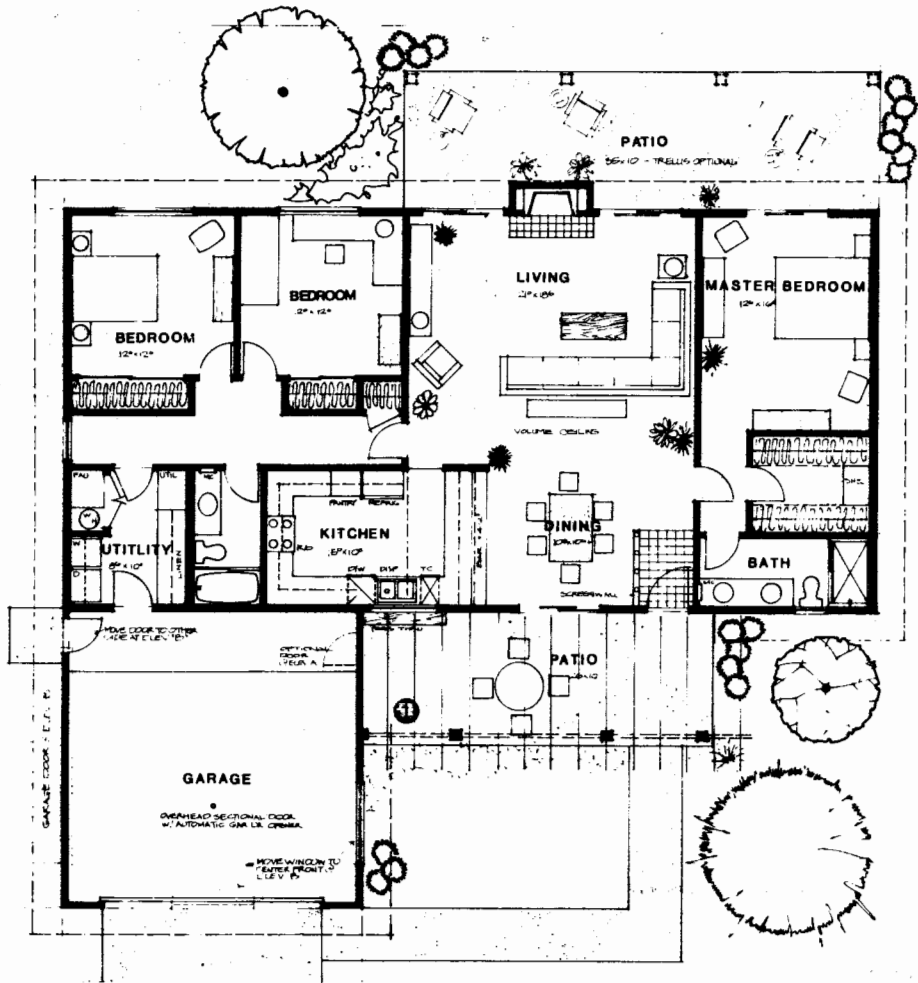
Plan 1600



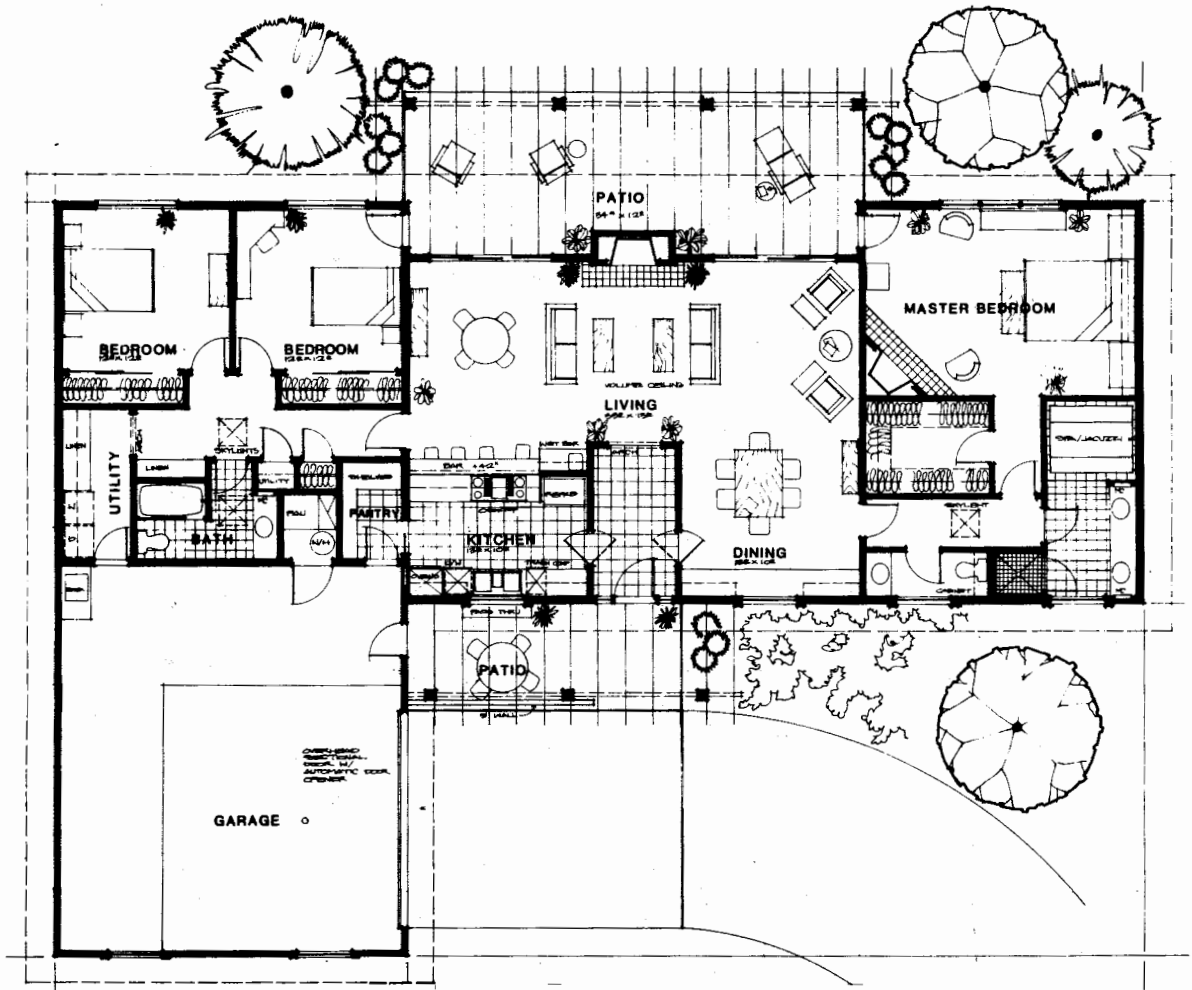
Plan 1660



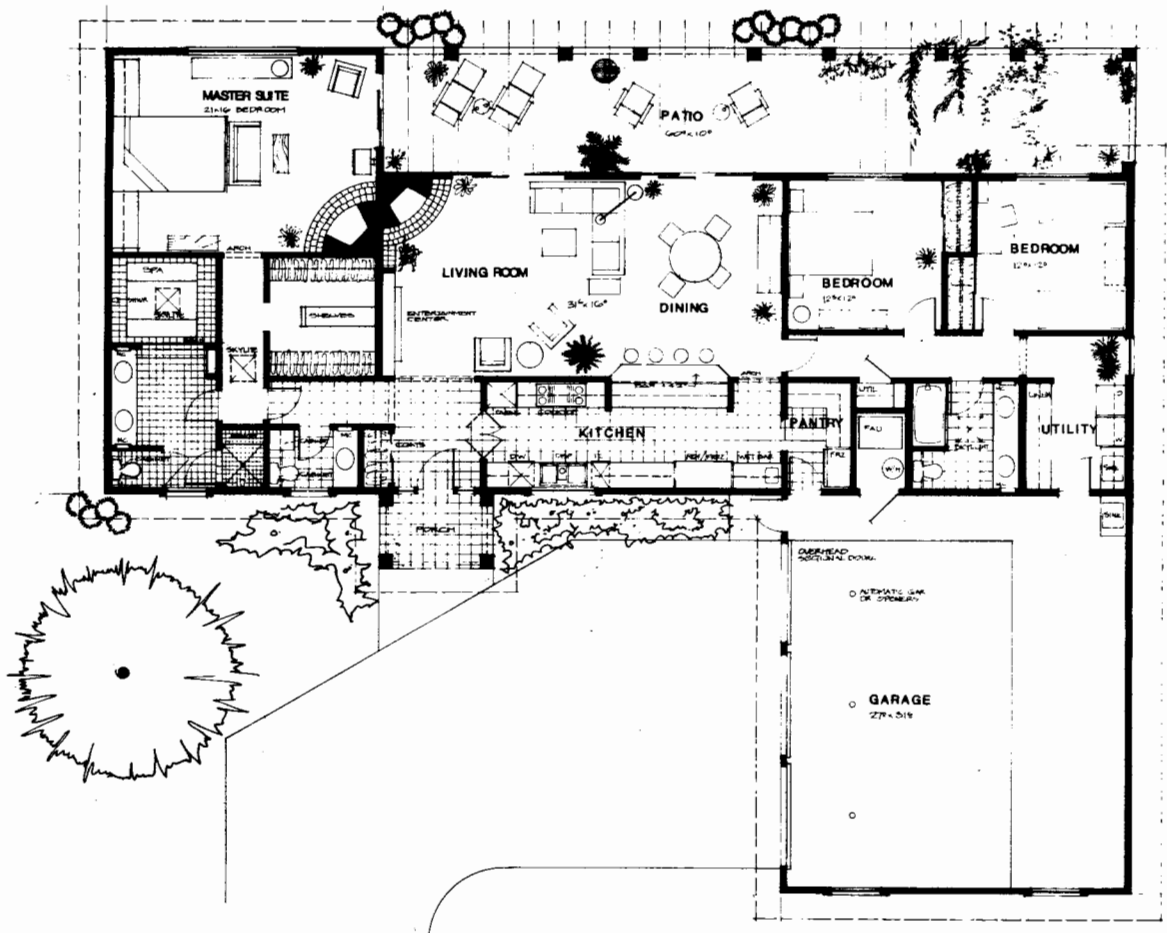
Plan 1800

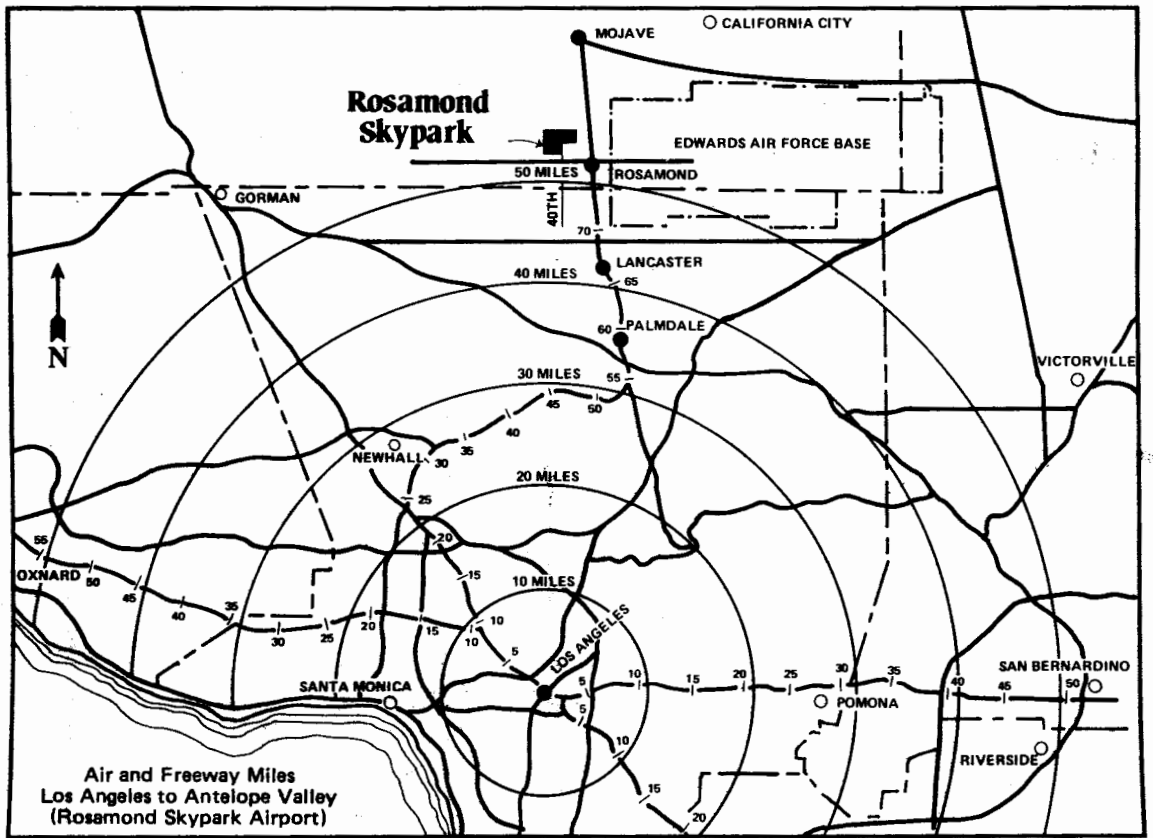


Plan 2190



Plan 2352



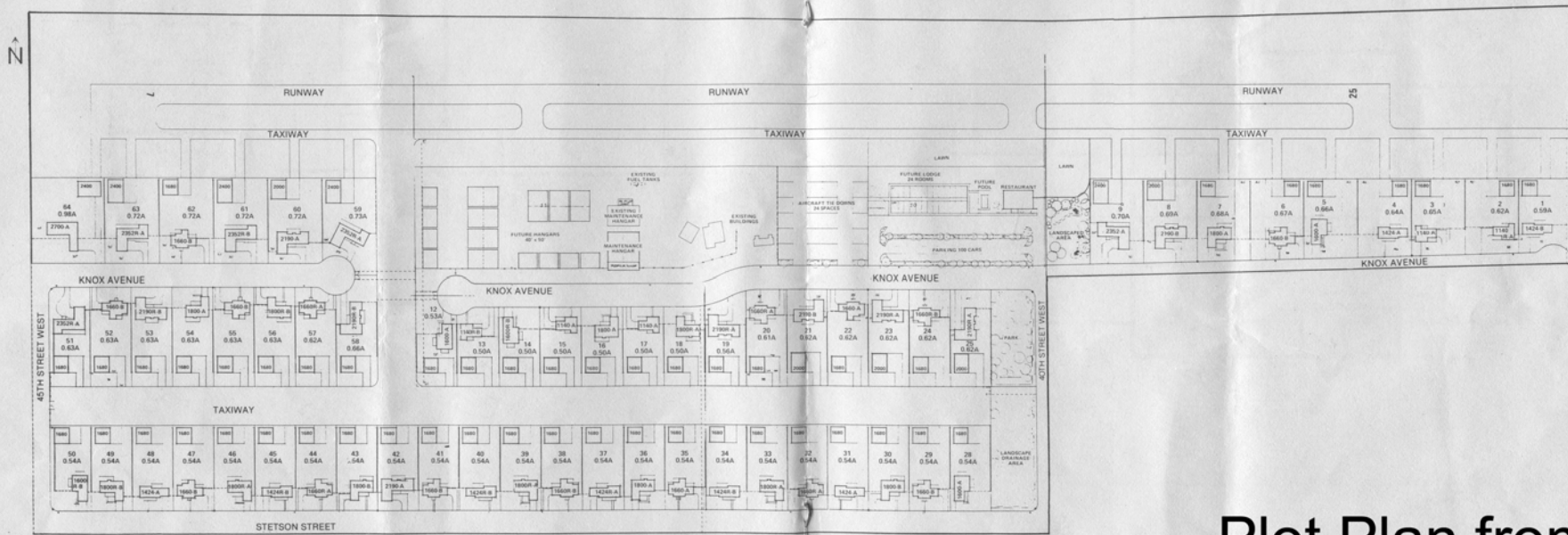


Rosamond Skypark

Brown Realtors - Exclusive Sales Agents
On Site Sales Office (805) 256-2663

100 East Thousand Oaks Blvd., Thousand Oaks, CA 91360
 (805) 495-2175 (818) 889-0804

Plot Plan



Plot Plan from
Original Sales Brochure