

Vesting Tentative Tract 6201

ZONING MAP 230-20

(SEC. 7297175.85 of the ORDINANCE CODE OF KERN COUNTY)
 SEC. 20 T9N R12W. S.B.B. & M.

KERN COUNTY CALIFORNIA
 DEPARTMENT OF PLANNING AND DEVELOPMENT SERVICES

LEGEND

- E(1) (ESTATE - 1 ACRE)
- E(2/2) (ESTATE - 1/2 ACRES)
- E(1/2) (ESTATE - 1/2 ACRE)
- R-1 (LOW-DENSITY RESIDENTIAL)
- R-2 (MEDIUM-DENSITY RESIDENTIAL)
- R-3 (HIGH-DENSITY RESIDENTIAL)
- MS (MOBILEHOME SUBDIVISION-6000 SQ FT)
- MS(1/4) (MOBILEHOME SUBDIVISION-1/4 ACRE)
- MP (MOBILEHOME PARK)
- CO (COMMERCIAL OFFICE)
- C-1 (NEIGHBORHOOD COMMERCIAL)
- C-2 (GENERAL COMMERCIAL)
- CH (HIGHWAY COMMERCIAL)
- M-1 (LIGHT INDUSTRIAL)
- M-2 (MEDIUM INDUSTRIAL)
- M-3 (HEAVY INDUSTRIAL)
- DI (DORILLING ISLAND)
- A-1 (LIMITED AGRICULTURE)
- PD (PRECISE DEVELOPMENT COMBINING)
- RS (RESIDENTIAL SUBURBAN COMBINING)
- MH (MOBILEHOME COMBINING)
- FPS (FLOODPLAIN-SECONDARY COMBINING)
- D (ARCHITECTURAL DESIGN COMBINING)
- H (FAIRPORT APPROACH HEIGHT COMBINING)
- CL (CLUSTER COMBINING)

WE HEREBY CERTIFY THAT THIS OFFICIAL "ZONING MAP" WAS ADOPTED IN THIS FORM BY RESOLUTION OF THE PLANNING COMMISSION OF THE COUNTY OF KERN, STATE OF CALIFORNIA, AT A REGULAR MEETING THEREOF HELD ON THE 20TH DAY OF JULY 1964, AND AS REVISED BY THE BOARD OF SUPERVISORS AFTER PUBLIC HEARING WHICH REVISION WAS REPORTED ON AND APPROVED BY THE PLANNING COMMISSION ON THE 8TH DAY OF SEPTEMBER 1964, IN THE MANNER PRESCRIBED BY LAW.

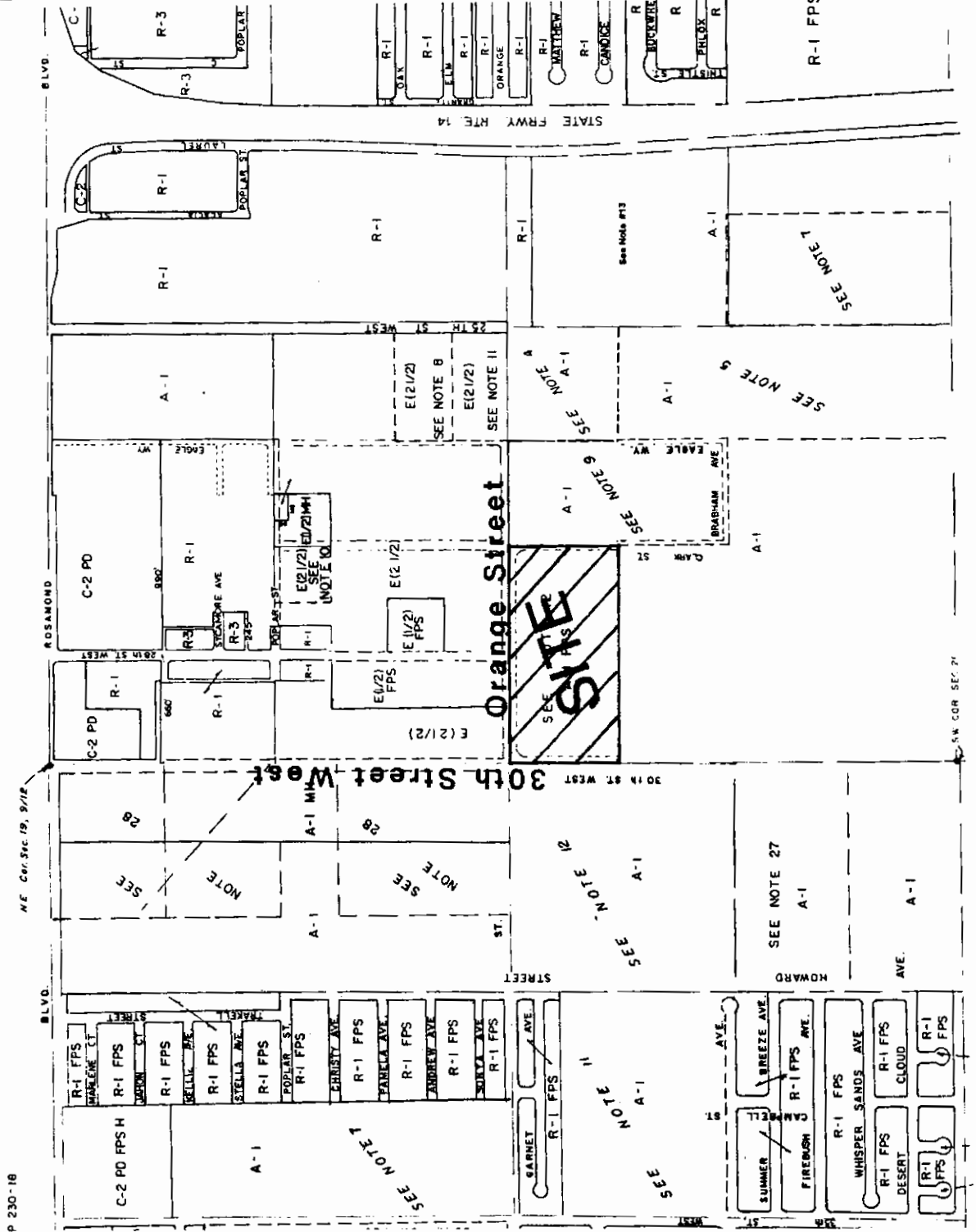
John L. Patton
 ACTING CHAIRMAN
 SECRETARY

WE HEREBY CERTIFY THAT THIS OFFICIAL "ZONING MAP" WAS ADOPTED AS AN AMENDMENT TO THE OFFICIAL LAND USE ZONING ORDINANCE OF THE COUNTY OF KERN BY THE BOARD OF SUPERVISORS OF THE COUNTY OF KERN, STATE OF CALIFORNIA, AT A REGULAR MEETING THEREOF HELD ON THE 22ND DAY OF SEPT 1964, BY AN URGENCY ORDINANCE PASSED BY SAID BOARD TO BE EFFECTIVE IMMEDIATELY.

Charles E. Patton
 CLERK

John L. Patton
 CHAIRMAN OF THE BOARD

1648



SW COR SEC 7

VICINITY MAP
NO SCALE

