

Item: Zone Change #2 to Map 231-14
Tentative Tract 6211

This is a request for zone change from E(2 ½) Estate Residential Suburban to R-1 FPS
Low density Residential – Floodplain

This tract is located at the NE corner of Rosamond Blvd and Mojave-Tropico Road. It
would have 52 single-family residences and would border the south and east sides of the
Tropico School.

Deadline for comments, Feb 8, 2005
Hearing scheduled Feb. 24, 2005

NOTICE OF PUBLIC HEARING

The **Kern County Planning Commission** will hold a hearing on **Thursday, February 24, 2005, at 7:00 p.m.** (or as soon as possible thereafter as the matter may be heard) to consider the request listed below. Anyone wishing to give pertinent testimony may appear and be heard. Location of the hearing is:

Chambers of the Board of Supervisors
First Floor - Kern County Administrative Center
1115 Truxtun Avenue (corner of Truxtun and "N"), Bakersfield, California

Free parking is available in the parking structure located south of the Administrative Center. If parking fees are being charged for an event, inform the parking attendant you are attending the Planning Commission hearing, and you will not be charged.

Applicant: Tropico, LLC by Hacker Engineering, Inc.

Location: North side of Rosamond Boulevard, approximately 245 feet east of Mojave-Tropico Road, Rosamond area

Proposal: A change in zone classification from **E (2 1/2) RS (Estate - 2 1/2 acres - Residential Suburban Combining) [R-1 FPS (Low-density Residential - Floodplain Secondary Combining) in suspense] to R-1 (Low-density Residential) or a more restrictive district.** This project qualifies as a special situation and does not require preparation of further environmental documents pursuant to Section 15182 of the State CEQA Guidelines.

If you have comments about this proposal you are encouraged to send them in writing. To ensure that your comments related to this request are incorporated into the Staff Report that is presented at the hearing, please try to submit all correspondence by February 8, 2005. Correspondence should be sent to:

Kern County Planning Department
2700 "M" Street, Suite 100
Bakersfield, CA 93301

Please make reference to the file number: **ZCC #2, Map #231-14**

If you have questions regarding this project, telephone the Kern County Planning Department and speak to:

Holly V. Nelson, Planner 2 ((661) 862-8636)

If you challenge the action taken on this request in court, you may be limited to raising only those issues you or someone else raised at this public hearing, or in written correspondence delivered to the Planning Department at, or prior to, the public hearing.

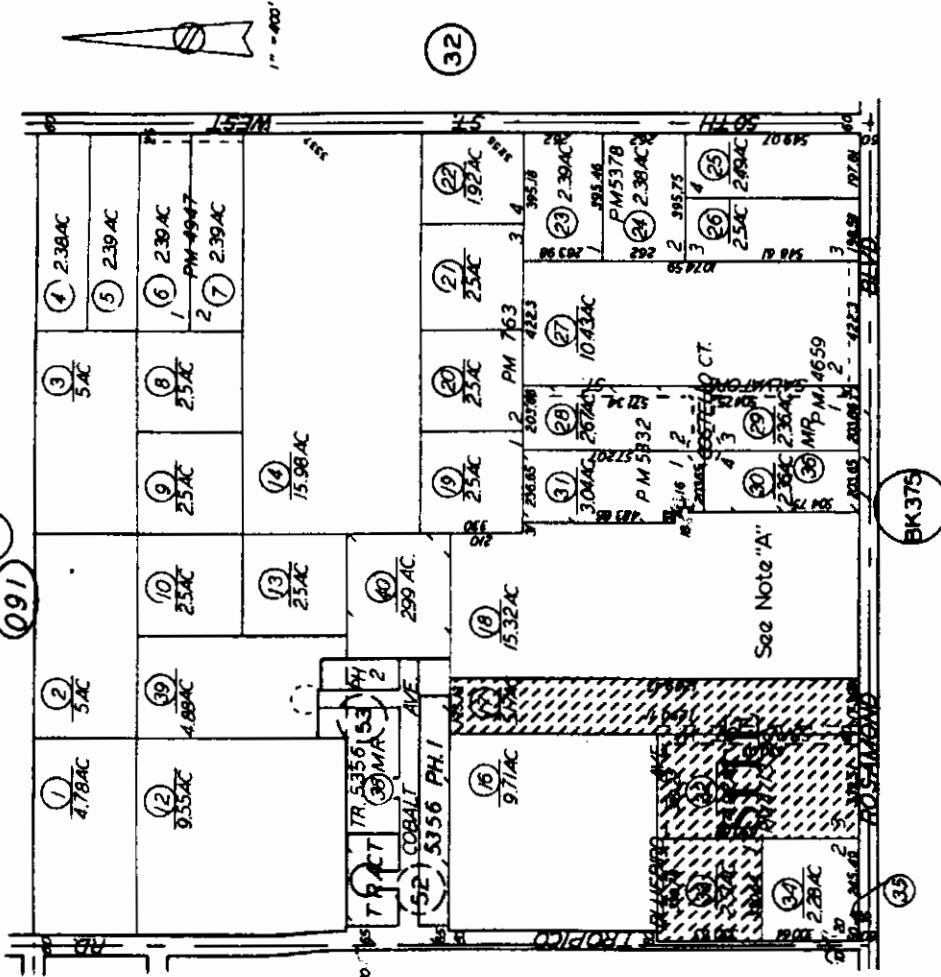
ZCC #2 Map #231-14

Section 14, T.9N., R.13W., SBB&M

252-09

SE.1/4 SEC.14 T.9N.R.13W.

SCHOOL DIST. 119-20 252-09
119-80



Note: A. For mobilehomes see pg. 46.

Note: This map is for assessment purposes only. It is not to be construed as purporting legal ownership or divisions of land for purposes of zoning or subdivision law.

ASSESSORS MAP NO. 252-09...
COUNTY OF KERN

