

NOTICE OF PUBLIC HEARING

The Kern County Planning Commission will hold a hearing on **Thursday, February 8, 2007, at 7:00 p.m.** (or as soon as possible thereafter as the matter may be heard) to consider the request listed below. Anyone wishing to give pertinent testimony may appear and be heard. Location of the hearing is:

Chambers of the Board of Supervisors
First Floor - Kern County Administrative Center
1115 Truxtun Avenue (corner of Truxtun and "N"), Bakersfield, California

Free parking is available in the parking structure located south of the Administrative Center. If parking fees are being charged for an event, inform the parking attendant you are attending the Planning Commission hearing, and you will not be charged.

Applicant: Mark Lebens by Soils Engineering, Inc.

Location: Southeast corner of 20th Street West and Marie Avenue, Rosamond area

Proposal: (a) Tentative Tract 6404 proposing to divide a 2 1/2-acre site into 11 lots ranging in size from 6,113 square feet (net) to 6,468 square feet (net) for residential use; development variations to the Land Division Ordinance to allow lot depths less than 100 feet and to allow single-family residential lots to front on a secondary highway; (b) Tentative Tract 6405 proposing to divide a 2 1/2-acre site into 12 lots ranging in size from 6,113 square feet (net) to 6,582 square feet (net) for residential use; a development variation to the Land Division Ordinance to allow lot depths less than 100 feet. This project qualifies as a special situation and does not require preparation of further environmental documents pursuant to Section 15182 of the State CEQA Guidelines.

If you have comments about this proposal you are encouraged to send them in writing. We encourage the submittal of written comments by January 23, 2007, so that those comments may be considered when Staff formulates its recommendation; however, written comments may be submitted anytime prior to, or at, the public hearing. Correspondence should be sent to:

Kern County Planning Department
2700 "M" Street, Suite 100
Bakersfield, CA 93301

Please make reference to the file number: **TR #6404; TR #6405**

If you have questions regarding this project, telephone the Kern County Planning Department and speak to:

Holly V. Nelson, Supervising Planner ((661) 862-8625)

If you challenge the action taken on this request in court, you may be limited to raising only those issues you or someone else raised at this public hearing, or in written correspondence delivered to the Planning Department at, or prior to, the public hearing.

~



PRELIMINARY
AND
NOT FOR CONSTRUCTION

NOTES

1. ALL DIMENSIONS AND DISTANCES UNLESS OTHERWISE SPECIFIED ARE IN FEET.
2. FOR RECORDS PURPOSES.
3. ALL LOTS TO BE SUBDIVIDED INTO LOTS OF 1/4 ACRES OR MORE.
4. ALL LOTS TO BE SUBDIVIDED INTO LOTS OF 1/4 ACRES OR MORE.
5. ALL LOTS TO BE SUBDIVIDED INTO LOTS OF 1/4 ACRES OR MORE.
6. ALL LOTS TO BE SUBDIVIDED INTO LOTS OF 1/4 ACRES OR MORE.
7. ALL LOTS TO BE SUBDIVIDED INTO LOTS OF 1/4 ACRES OR MORE.
8. ALL LOTS TO BE SUBDIVIDED INTO LOTS OF 1/4 ACRES OR MORE.
9. ALL LOTS TO BE SUBDIVIDED INTO LOTS OF 1/4 ACRES OR MORE.
10. ALL LOTS TO BE SUBDIVIDED INTO LOTS OF 1/4 ACRES OR MORE.

BASELISE BEARING

ALL DIMENSIONS AND DISTANCES UNLESS OTHERWISE SPECIFIED ARE IN FEET.

LEGAL DESCRIPTION

BEING A PORTION OF A PORTION OF THE NORTHWEST QUARTER OF THE NORTHWEST QUARTER OF SECTION 28, T. 9 N., R. 12 W., S. 18 E., 1/4, IN THE UNINCORPORATED AREA OF THE COUNTY OF KERN, STATE OF CALIFORNIA, BEING MORE PARTICULARLY DESCRIBED AS FOLLOWS:

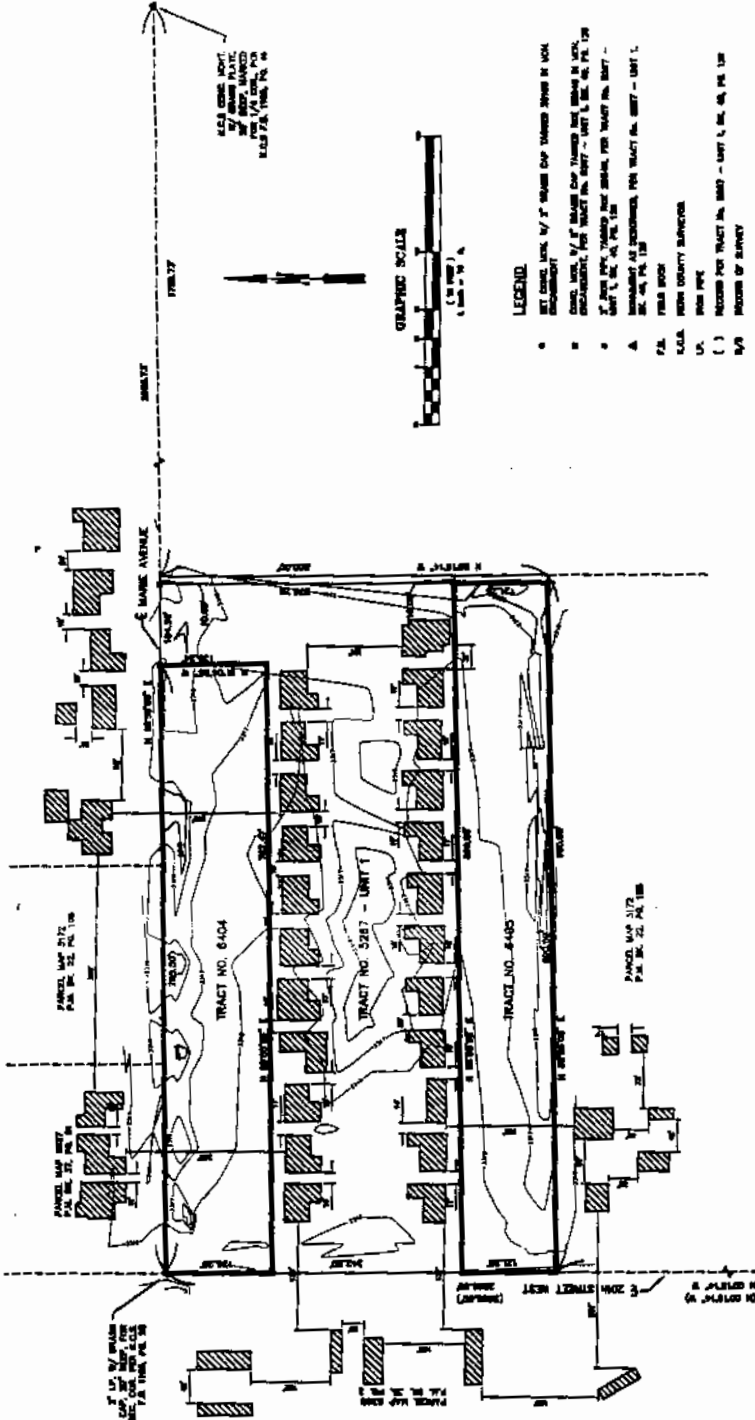
LEGEND

- 1. 1/4 ACRES (SHOWN)
- 2. 1/4 ACRES (NOT SHOWN)
- 3. 1/4 ACRES (NOT SHOWN)
- 4. 1/4 ACRES (NOT SHOWN)
- 5. 1/4 ACRES (NOT SHOWN)
- 6. 1/4 ACRES (NOT SHOWN)
- 7. 1/4 ACRES (NOT SHOWN)
- 8. 1/4 ACRES (NOT SHOWN)
- 9. 1/4 ACRES (NOT SHOWN)
- 10. 1/4 ACRES (NOT SHOWN)

GRAPHIC SCALE



AREA COME OUT
BY SHOWN PLAT
AND NOT TO BE
RELIED UPON FOR
LEGAL PURPOSES



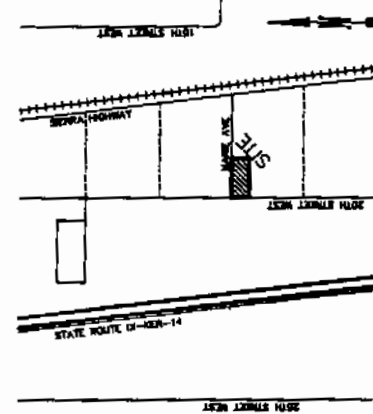
PROJECT DESCRIPTION

- 1. TOTAL PROJECT AREA: 3.18 ACRES (SHOWN)
- 2. NUMBER OF PARCELS TO BE CREATED: 11 LOTS
- 3. PROPOSED LOTS: 11 LOTS
- 4. PROPOSED LOTS: 11 LOTS
- 5. PROPOSED LOTS: 11 LOTS
- 6. PROPOSED LOTS: 11 LOTS
- 7. PROPOSED LOTS: 11 LOTS
- 8. PROPOSED LOTS: 11 LOTS
- 9. PROPOSED LOTS: 11 LOTS
- 10. PROPOSED LOTS: 11 LOTS

OWNER

SEI ENGINEERING, INC.
4400 YEAGER WAY
BAKERSFIELD, CA 93313
661.831.5100 FAX: 661.831.2111
email: tom@seieengineering.com

VICINITY MAP



4400 YEAGER WAY
BAKERSFIELD, CA 93313
661.831.5100 FAX: 661.831.2111
email: tom@seieengineering.com

TENTATIVE TRACT MAP
NO. 6404

A DIVISION OF A PORTION OF THE NW 1/4 OF THE NW 1/4
OF SECTION 28, T. 9 N., R. 12 W., S. 18 E.,
IN THE UNINCORPORATED AREA OF
THE COUNTY OF KERN, STATE OF CALIFORNIA

DATE: 10/15/10
BY: [Signature]
COUNTY RECORDER

