

NOTICE OF PUBLIC HEARING

The Kern County Planning Commission will hold a hearing on **Thursday, September 28, 2006, at 7:00 p.m.** (or as soon as possible thereafter as the matter may be heard) to consider the request listed below. Anyone wishing to give pertinent testimony may appear and be heard. Location of the hearing is:

Chambers of the Board of Supervisors
First Floor - Kern County Administrative Center
1115 Truxtun Avenue (corner of Truxtun and "N"), Bakersfield, California

Free parking is available in the parking structure located south of the Administrative Center. If parking fees are being charged for an event, inform the parking attendant you are attending the Planning Commission hearing, and you will not be charged.

Applicant: Matthews Land, LLC by Rose-Anne, LLC

Location: East side of 30th Street West, approximately 700 feet north of Holiday Avenue, Rosamond area

Proposal: A change in zone classification from A-1 (Limited Agriculture) to R-1 FPS (Low-density Residential - Floodplain Secondary Combining) or a more restrictive district. This project qualifies as a special situation and does not require preparation of further environmental documents pursuant to Section 15182 of the State CEQA Guidelines.

If you have comments about this proposal you are encouraged to send them in writing. We encourage the submittal of written comments by September 12, 2006, so that those comments may be considered when Staff formulates its recommendation; however, written comments may be submitted anytime prior to, or at, the public hearing. Correspondence should be sent to:

Kern County Planning Department
2700 "M" Street, Suite 100
Bakersfield, CA 93301

Please make reference to the file number: **ZCC #43, Map #230-20**

If you have questions regarding this project, telephone the Kern County Planning Department and speak to:

Kate B. Shea, Planner 1 ((661) 862-8738)

If you challenge the action taken on this request in court, you may be limited to raising only those issues you or someone else raised at this public hearing, or in written correspondence delivered to the Planning Department at, or prior to, the public hearing.

ZCC #43, Map #ZSU-20

Section 20, Township 9 North, Range 12 West, SBB&M

ADMINISTRATIVE

ZONING MAP 230-19

(SEC. 7297 OF THE ORDINANCE CODE OF KERN COUNTY)
 Section 19, T.9N., R.12W., S.B. & M.
 KERN COUNTY CALIFORNIA

DEPARTMENT OF PLANNING AND DEVELOPMENT SERVICES

LEGEND

- A-1 (LIMITED AGRICULTURE)
- E(1/4) (ESTATE - 1/4 ACRE)
- E(1/2) (ESTATE - 1/2 ACRE)
- R-1 (LOW-DENSITY RESIDENTIAL)
- R-2 (MEDIUM-DENSITY RESIDENTIAL)
- R-3 (HIGH-DENSITY RESIDENTIAL)
- MS (MOBILEHOME SUBDIVISION-6000 SQ FT)
- MS(1/4) (MOBILEHOME SUBDIVISION- 1/4 ACRE)
- MP (MOBILEHOME PARK)
- CO (COMMERCIAL OFFICE)

- 10. ORD. G-5250 A-1 to R-1 FPS sup. TR 5201 A-C
- 11. ORD. G-5249 A-1 to R-1 FPS sup. TR 5200 A
- 12. ORD. G-5251 A-1 to R-1 FPS sup. TR 5200 A
- 20. ORD. G-5478 A-1 to R-1 FPS CL in susp. TR 5185 A-1
- 21. SEE (M), A-1 to R-1 in susp.
- 22. SEE (C), A-1 and A-1 M to R-1 FPS M, PTN IN SUSP.

ADMINISTRATIVE

ZONING MAP 230-30

(SEC. 7297 OF THE ORDINANCE CODE OF KERN COUNTY)
 SEC. 30, T. 9N., R. 12W., S. B. B. & M.
 KERN COUNTY CALIFORNIA

NOTES:

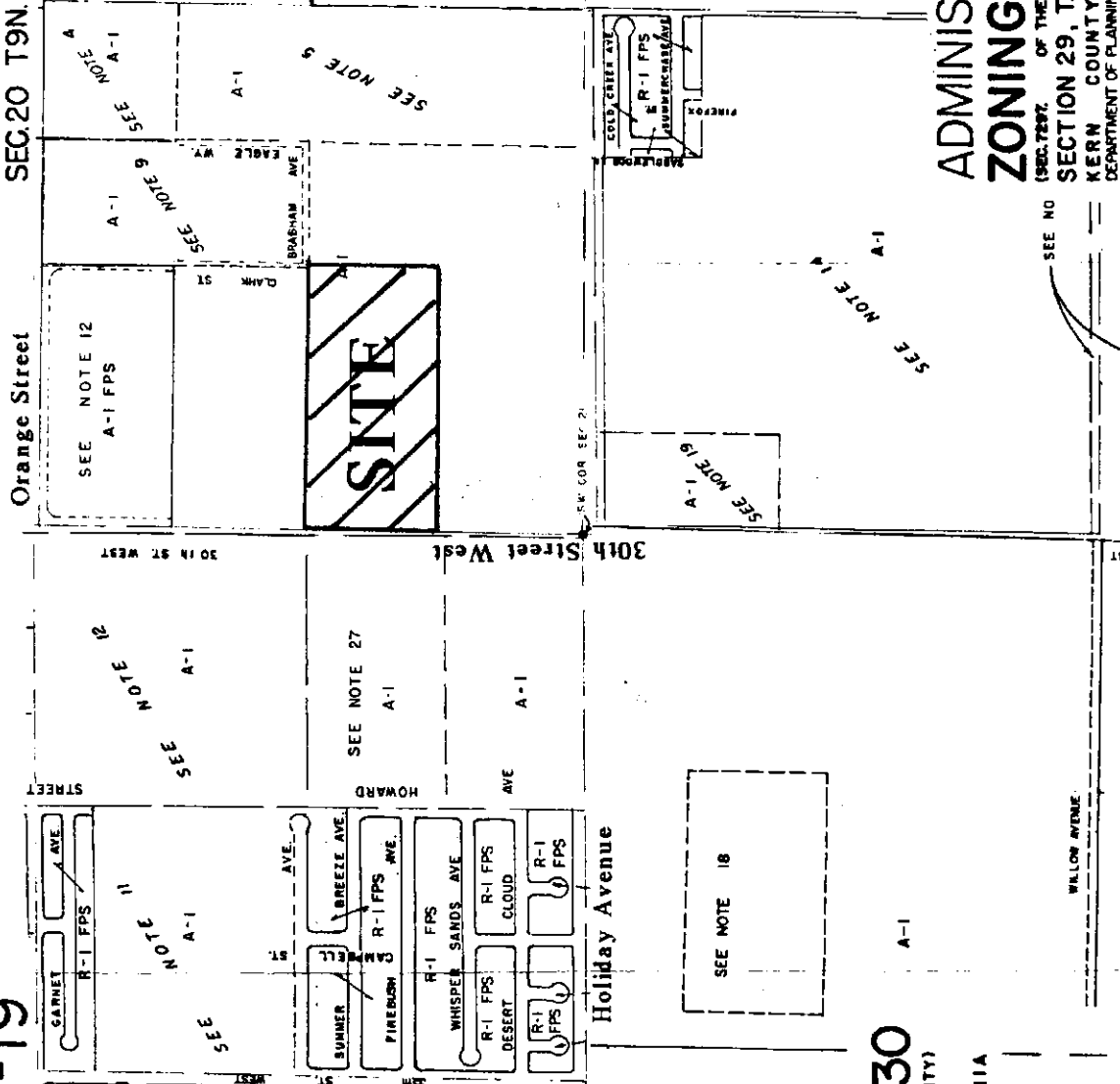
- 12. SEE (M), A-1 to R-1 FPS, IN SUSPENSE
- 18. SEE (M), A-1 to R-1 FPS, IN SUSPENSE
- 19. SEE (M), A-1 to R-1 FPS, IN SUSPENSE
- 20. SEE (M), A-1 to R-1 FPS, IN SUSPENSE
- 21. SEE (M), A-1 to R-1 FPS, IN SUSPENSE

ZONING MAP 230-20

(SEC. 7297 OF THE ORDINANCE CODE OF KERN COUNTY)
 SEC. 20 T.9N. R.12W. S.B.B. & M.
 CALIFORNIA

DEPARTMENT OF PLANNING AND DEVELOPMENT SERVICES

- 1. ORD. G-4335 A-1 to R-1 FPS TR 4835
- 2. ORD. G-4715 A-1 to R-1 FPS TR 5004
- 3. ORD. G-4804 A-1 to R-1 FPS TR 5004
- 4. ORD. G-4805 A-1 to R-1 FPS TR 5004
- 5. ORD. G-4806 A-1 to R-1 FPS TR 5004
- 6. ORD. G-5020 A-1 to R-1 FPS TR 5004
- 7. ORD. G-5021 A-1 to R-1 FPS TR 5004
- 8. ORD. G-5022 A-1 to R-1 FPS TR 5004
- 9. ORD. G-5023 A-1 to R-1 FPS TR 5004
- 10. SEE (Y), E(1/2) to R-1 FPS in susp.
- 11. SEE (M), E(1/2) to R-1 FPS in susp.
- 12. SEE (M), A-1 to R-1 FPS in susp.
- 13. (M) A-1 to R-1 FPS in susp.



ADMINISTRATIVE

ZONING MAP 230-29

(SEC. 7297 OF THE ORDINANCE CODE OF KERN COUNTY)
 SECTION 29, T.9N., R.12W., S.B.B. & M.
 KERN COUNTY CALIFORNIA

NOTE:

- 3. ORD. G-4887 A-1 to R-1 FPS TR 5004
- 4. ORD. G-5038 A-1 to R-1 FPS TR 5004
- 5. ORD. G-5039 A-1 to R-1 FPS TR 5004
- 6. ORD. G-5040 A-1 to R-1 FPS TR 5004
- 7. ORD. G-5041 A-1 to R-1 FPS TR 5004
- 8. ORD. G-5042 A-1 to R-1 FPS TR 5004
- 9. ORD. G-5043 A-1 to R-1 FPS TR 5004
- 10. ORD. G-5044 A-1 to R-1 FPS TR 5004
- 11. ORD. G-5045 A-1 to R-1 FPS TR 5004
- 12. ORD. G-5046 A-1 to R-1 FPS TR 5004
- 13. ORD. G-5047 A-1 to R-1 FPS TR 5004
- 14. ORD. G-5048 A-1 to R-1 FPS TR 5004
- 15. ORD. G-5049 A-1 to R-1 FPS TR 5004
- 16. ORD. G-5050 A-1 to R-1 FPS TR 5004
- 17. ORD. G-5051 A-1 to R-1 FPS TR 5004
- 18. ORD. G-5052 A-1 to R-1 FPS TR 5004
- 19. ORD. G-5053 A-1 to R-1 FPS TR 5004
- 20. ORD. G-5054 A-1 to R-1 FPS TR 5004
- 21. ORD. G-5055 A-1 to R-1 FPS TR 5004
- 22. ORD. G-5056 A-1 to R-1 FPS TR 5004
- 23. ORD. G-5057 A-1 to R-1 FPS TR 5004
- 24. ORD. G-5058 A-1 to R-1 FPS TR 5004
- 25. ORD. G-5059 A-1 to R-1 FPS TR 5004
- 26. ORD. G-5060 A-1 to R-1 FPS TR 5004

